

**North Tyneside Riders
Presents**

M27 Open Time Trial

To be held on Sunday 18th August 2024

**Promoted on behalf of Cycling Time Trials under their Rules
& Regulations**

Event Secretary

**Ian Gallon
17 Springfield gardens, Wallsend.
Tyne & Wear.
NE28 8AJ.
07828900383**

Galnufc@msn.com

First rider is off at 10.10 am.

Please note any problems on the road please contact Pam Shaper on 07710 536578 or 07828 900383, who will be looking after the start and HQ while the race is in progress.

HQ – Jubilee Hall, Bridge Street, Rothbury. NE65 7SD.

The HQ will be open at 9am to sign on & numbers will be available from then onwards.

There will be Coffee and Tea refreshments available afterwards & a presentation.

Parking is available in Rothbury Village & but please park responsibly.

27 Miles

Start at kerbside 200 metres west of Rothbury town on B6341, just past entrance to car park on the left. Proceed in direction of Thropton. Bear left down bank to Flotterton at the end of village and bear left to Hepple (5 miles). Continue straight ahead to Bilsmoor. Proceed to Elsdon (11.25m) and turn left at the end of the village to climb the Gibbet (1:6 or 1:7). Proceed to Harwood Gate House (17.3m) and turn left on B6342 to Rothley Crossroads. Turn left on B6342 to Ewesley Station, Coldrife, Forestburn Gate, Garleigh Summit. Finish at the crest of final small climb before descent to Rothbury.

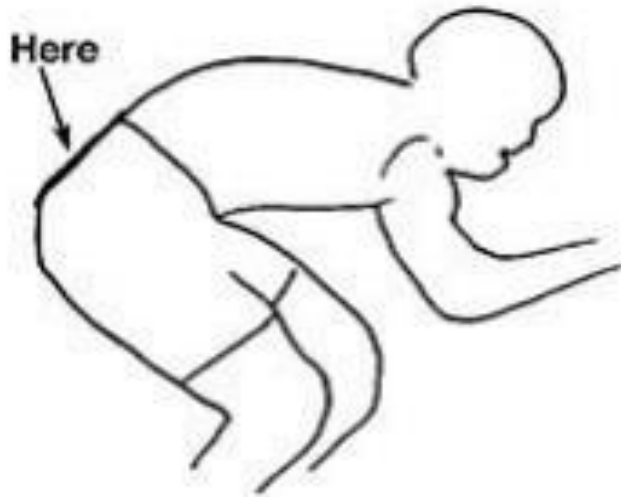
**ALL RIDERS ARE REMINDED OF THEIR
RESPONSIBILITY FOR “HEADS UP” RIDING
AT ALL TIMES TO BE AWARE OF HAZARDS.**

All riders must sign the “sign on sheet” when collecting their numbers and must sign out again when returning numbers after their race.



Please make sure your number is placed correctly on jerseys/skinsuits to help time timekeepers.
If the timekeepers are unable to read your Number then your time may be void.

Below is a diagram for positioning your number on jerseys/skinsuits.



A WORKING FRONT & REAR LIGHT MUST BE FIXED TO THEIR MACHINE PLUS WEARING A HELMET ARE NOW COMPULSORY TO START A CTT EVENT.

All riders are responsible for their own safety.

You must obey the rules of the road and obey all traffic signs, signage and direction signs.
It is your responsibility to ensure that your machine is roadworthy and that you ride safely
at all times.

You must look ahead and not ride with your head down.

You must not take pace or shelter from any other vehicle or competitor (no drafting).

Failure to comply with the above may lead to disciplinary action being taken.

No warming up on the course once the race has started or dismounting in the finish area.



NTR M27 Prize list

1st Open £30.

2nd Open £20.

3rd Open £10.

1st Female £30.

2nd Female £20.

3rd Female £10.

1st V40 £20.

1st V50 £20.

1st V60 £20.

