

Course Description:

S4/50 (2018) (M) Start in the layby on the Exeter bound direction and opposite Dean Prior Church at a point level with the emergency telephone 779B.

Proceed in the Exeter bound direction to pass Buckfastleigh, Ashburton, Bickington, Heathfield and Chudleigh Knighton. At Chudleigh Bridge filter left (M), turn right (M), give way, and right again (M) to rejoin the A38 in the Plymouth bound direction. Retrace the outward route to filter left at the sign "Lower Dean". At the base of the slip road turn right (M), give way, to pass under the A38, then turn right again (M2), give way, on to the old A38. Continue past Buckfastleigh to Dart Bridge where take second exit at the mini roundabout (M) and then turn left to rejoin the A38, Exeter bound direction. Retrace first circuit via Chudleigh Bridge and back to the Lower Dean slip road.

At the base of the slip road turn left (M) and in approximately 60 yards turn left into road signed "Rattery". Finish at a point level with and opposite the sign for Dean Court Farm.

Start:



Turn Off 1 at Chudleigh

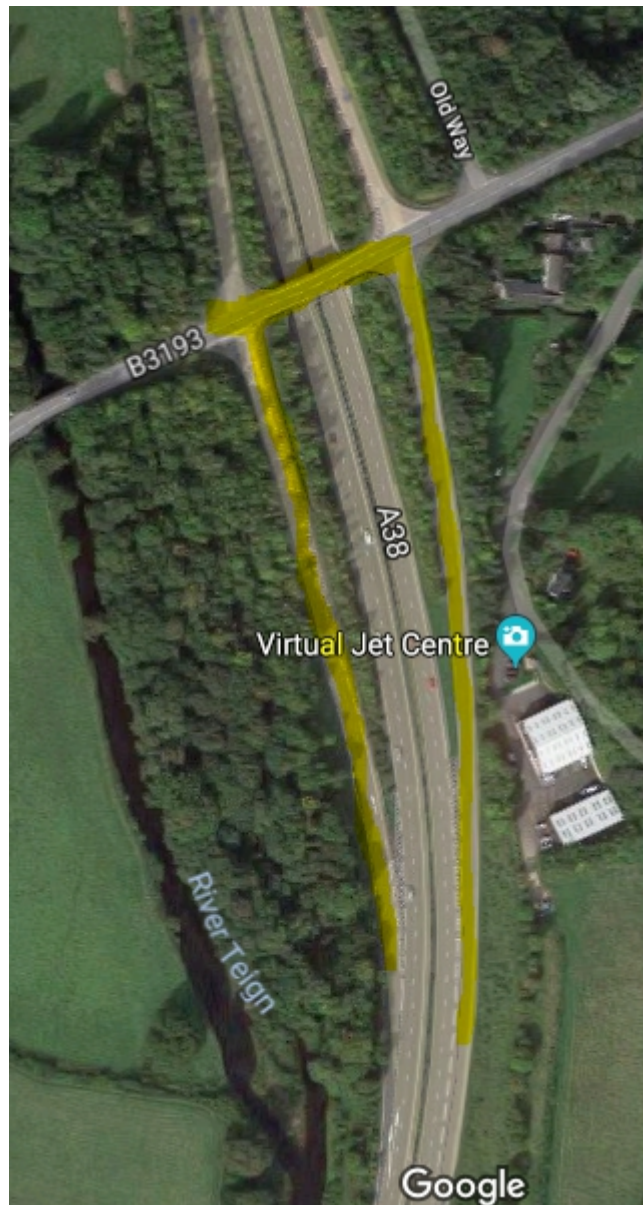


Turn 2 - Right



Turn 3 – Right





Turn Around 1

Off A38 at Lower Dean

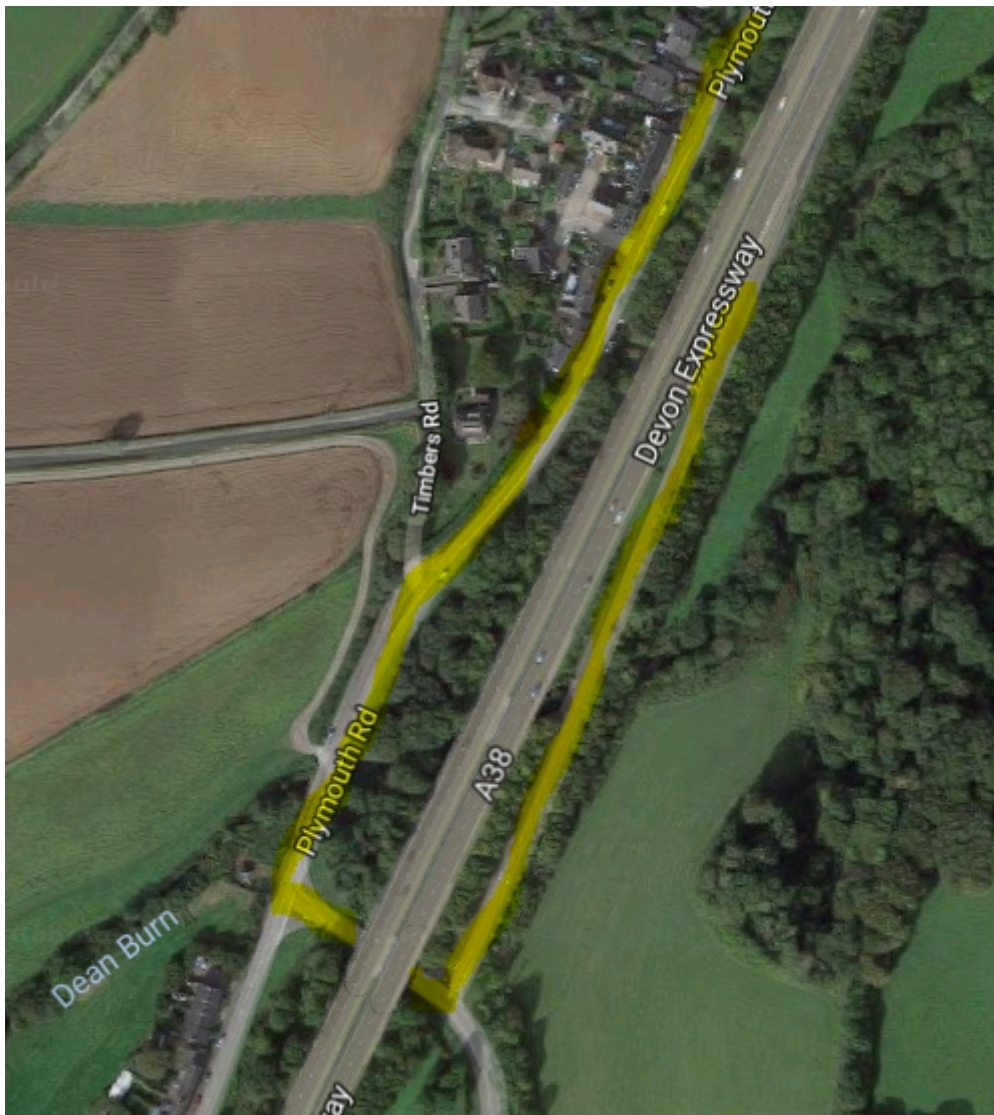


Turn – Right



Turn Right – do not cross centre line





Dean Prior turn around.



Roundabout 2nd Exit



Buckfast roundabout back to A38.



Repeat up to Chudleigh and back to Lower Dean.

Left Turn to head towards finish on second lap





Left to head to farm shop



Finish



Route to finish.