

# Cleveland Wheelers Open Hillclimb

(Incorporating VTTA (North) Hill Climb Trophy)

Sunday 2<sup>nd</sup> October 2016

Supported by The House Designerwear, Yarm

Run For & On Behalf Of CTT Under Their Rules & Regulations

## Event Secretary

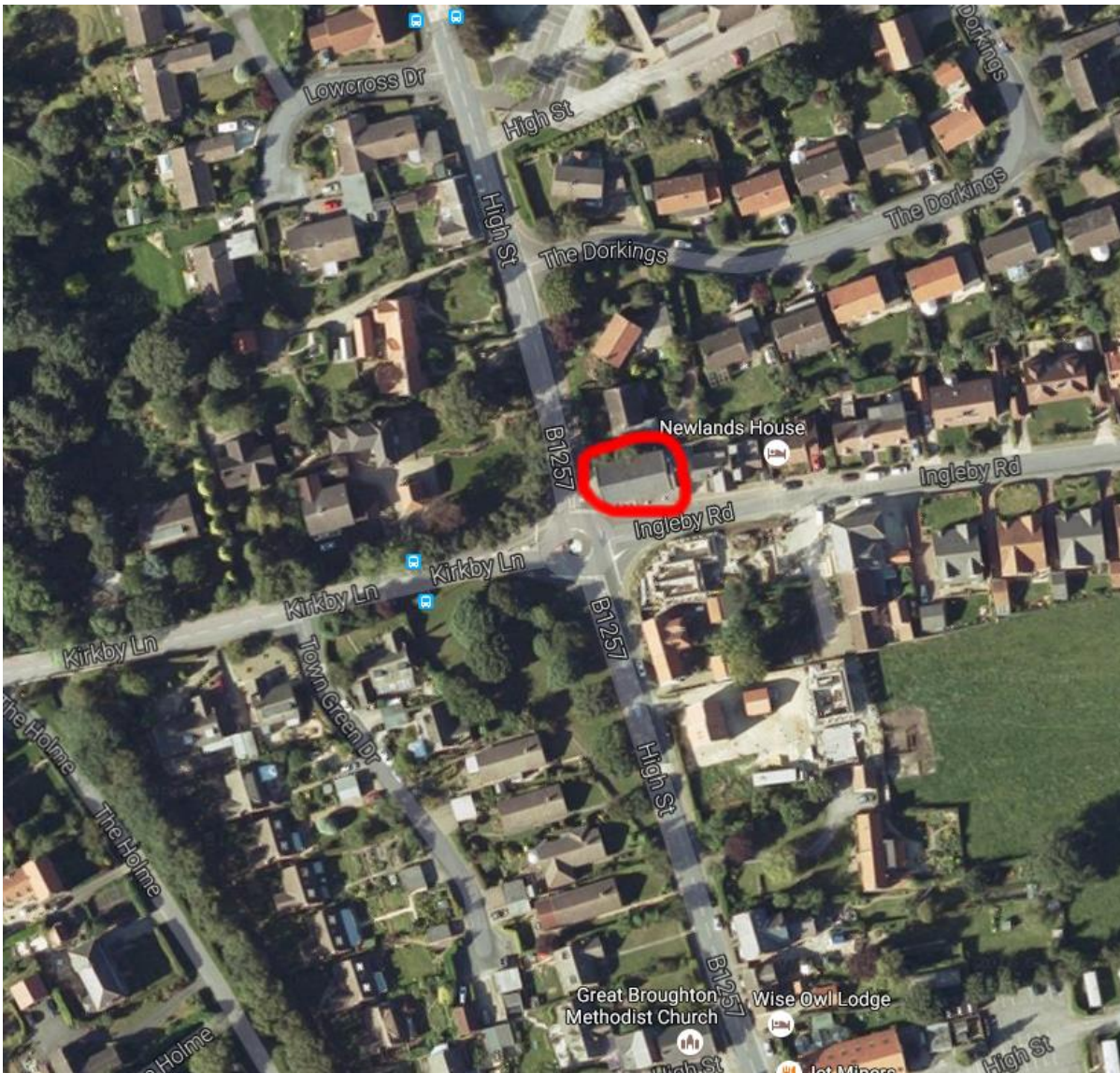
Steven Tilly. Email: [secretary@clevelandwheelers.com](mailto:secretary@clevelandwheelers.com) Tel: 07982 255809

## Event HQ

Event HQ is at Great Broughton Village Hall, Ingleby Road, Great Broughton, Cleveland, TS9 7ER.

This is the building on the left, at the mini-roundabout as you come into Great Broughton from the Stokesley direction (ringed in red, below).

Event HQ is open for sign-on from approximately 8.30. First off is 10:01.



There is **NO PARKING** whatsoever at the HQ, only on adjacent roads. It is best if you cycle to the HQ, but if you must arrive by car park then please park respectfully while you sign in. After sign-in please move your car.

The best procedure is to park at the top of Clay Bank (the finish area) and then roll back down the hill to HQ to sign on. Alternatively, park in Stokelsey, where there is ample free parking, and ride to event HQ from there.

**DO NOT** warm up on Turbo Trainers in residential areas, try to keep it to the car parks. No warming up at HQ.

### Course Description

The course begins on the B1257 (Great Broughton to Helmsley road) adjacent to Maynard's Garden Centre (ringed below).



The course is straight up the B1257, approximately 1.6 miles, climbing approximately 470ft and having an average grade of 5%. The bulk of the actual climbing is in the final half mile or so where the grade ramps to ~12%.

The finish is at the top of the bank adjacent to the car park/Ingleby Greenhow turn off on the left.

### Warnings & Advisories

No warming-up on any part of the course once the event has started.

No U-Turns in the vicinity of the start/finish areas

CTT recommends the use of helmets by all competitors and this is **MANDATORY** for all competitors under 18 years of age.

### Results Service

A live update is usually available in the finish area car park (weather dependant). Final results will be displayed in event HQ at the end of the event and prizes awarded once all times are ratified.

### Café

A café will be available in Event HQ with cakes, sandwiches & refreshments. Donations are kindly invited for these refreshments, all proceeds of which go to charitable causes selected by Cleveland Wheelers CC.

## Prize List

Best Combined Time (CWCC + SWCC Hillclimbs)

1. £TBC

Scrach

1. £60
2. £30
3. £15

Ladies

1. £30
2. £20
3. £10

Veterans (40-44, 45-49, 50-54, 55-59, 60-64, 65-69, 70+)

1. £10

Juniors (Separate cats for Male/Female)

1. £30
2. £20
3. £10

Juveniles (Separate cats for Male/Female)

1. £30
2. £20
3. £10

CWCC (Highest placed CWCC first claim member)

1. £30
2. £20
3. £10

Tandem

1. £30

As is customary in this event, only one prize money will be awarded per qualifying rider (other than the joint prize), this being the higher of any amount.