

Course Start (o/s 513297)

START at 7th kerb joint from northern end of lay-by south of 34th milestone on the B1383. Proceed north through Quendon, Newport, Littlebury, Great Chesterford, to Stump Cross roundabout (9.83m)(M). Turn left at 1st exit onto A1301 to cross straight over next two roundabouts, passing under A11 flyover, to Hinxton Hall roundabout (CARE) where straight on to the Sawston roundabout at the junction with the A505. TURN, 3rd exit (M&C)(12.25m) to retrace to pass under the A11 to Stump cross roundabout. Turn right (M), 3rd exit, onto B1383 and retrace along course to **FINISH** at surface water gully at centre of green just north of "Chequers" PH. (o/s 512289)

In the interest of your own safety, Cycling Time Trials and the event promoters strongly advise you to wear a hard shell safety helmet that meets an internationally accepted safety standard.

All Juniors under the age of 19 must wear a suitably approved helmet.

This is the responsibility of the rider, or parent/guardian if under 18.

LOCAL REGULATIONS

4.8.2, No U Turns allowed within sight of start or finish. Riders carrying out this dangerous manoeuvre are liable for disqualification from the event and further disciplinary action by London East District

.You must have a functioning flashing or static red rear lamp.

You may only use the toilet facilities at Race HQ

There are no Refreshments or Changing Facilities. Parking is limited to the roadside in the area of the M11 motorway bridge near Race HQ , or opposite the Huts in North Hall Road. Do not park at the Start area

Your Number and the Signing On/Off Sheet will be available at the rear of HQ. When returning your number YOU MUST SIGN OFF, or be declared as a DNF and potentially face further action by CTT

COVID PRECAUTIONS :

If you or your family bubble feel unwell in ANY way, DO NOT ATTEND.

Do not gather in groups. Please vacate Race HQ as rapidly as possible.

No more than 5 to queue at the Start.

Do not leave feeding bottles at the Start. Do not discard gel wraps etc.

Do NOT approach the Timekeepers

There is no race support for riders. You must carry your own spares and pump. Carry a Mobile Phone, with my number in it. Marshals are NOT allowed to give riders a lift. Phone a friend.

Bring your own pen for Sign On / Off, and Number safety pins

Do not 'Draught' or take pace, give room for the overtaking rider.

Regulation 4.8.4 Static trainers are not allowed at morning events.

No warming up on the course once the event has started

*Incorporating
Comet Cycling Club
Crescent Wheelers C.C.
University Cycling Club*



PROMOTED FOR AND ON BEHALF OF
CYCLING TIME TRIALS
UNDER THEIR
RULES AND REGULATIONS

Lea Valley Cycling Club

100TH Anniversary of the

COMET 25

SCRATCH, TEAM AND HANDICAP

Incorporating the Rosslyn Ladies' Cup



FOUNDED 1904

Sunday 4th October, 2020 , 8am
COURSE E1/25b

A SPOCO SE Group 2 event

Timekeepers
Miss Frida Wezel
Ian Taylor, Esq.

Event Secretary **Michael Keen**
33, South Green.
Mattishall
Dereham
NR20 3JY

Mikes Mobile: 07498 297373

Event HQ: Lea Valley CC Race HQ, North Hall Lane, Ugley, CM22 6JD

AWARDS

100TH ANNIVERSARY Special Award for Course Record
£100

OVERALL

1st THE FULLER TROPHY to be held for one year + £50
2nd £ 40 3rd £30 4th £ 15

Fastest Team of Three

THE AUBURN CUP to be held for one year + £ 15 each

WOMEN

1st The Rosslyn Ladies Cup to be held for one year + £50
2nd £ 40 3rd £ 20

Handicap: 1st £ 40 2nd £ 30 3rd £ 20

Handicapped using the CTT / ECCA standardised system.

JUNIORS AND SCHOOLAGE

1st £30

TANDEMS

£50 FOR THE Fastest Machine

Course Warning

The course will be Marshalled at the main roundabouts, Stump X and Sawston

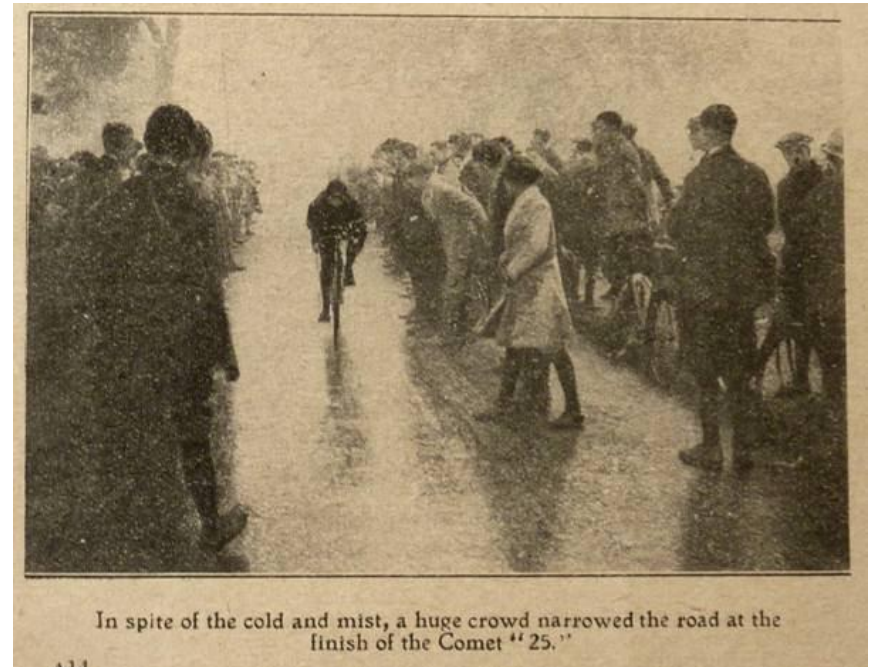
Take care through the villages, and at all roundabouts.

Especially **Hinxton RAB** just north of the A11 junction. Going out, the exit is sharp and has an adverse camber. At the RAB just north of Newport on your return. **Give Way** to traffic turning right on the RAB, to Saffron Walden.

The Comet 25, founded in 1921 as an All Star event

By Alf Auburn.

The first event was won by Freddie Dredge, Shaftesbury CC



The Comet finish in 1924.

There were 300 entries, of which 150 rode*

THANK YOU

To all Timekeepers, Marshals and Stewards.

To Keith West, for his invaluable help with the computing.
And especially to all those who helped with the Covid deep clean
Over several weekends at Race HQ.

I wish all riders a safe ride and a good time.

Michael

*Acknowledgements to Cycling and Fergus Muir, Tricycle Association.